



FMC Corporation
Agricultural Solutions
100 Niagara Street
Middleport, NY 14105

Contact Us

Phone: 716.735.9769
Fax: 716.735.9681
In Person: 8 S. Vernon St
Middleport, NY
Email: jessica.heideman@fmc.com
Web: www.FMC-Middleport.com

Western Surface Impoundment Area Upgrade

FMC plans, as part of site maintenance and upkeep, to modify the Western Surface Impoundment Area (WSI) located near the onsite water treatment plant.

Construction (earth work) began November 4, 2014, and will take place on the plant property for approximately six weeks depending on weather. Generally, work hours will be from 7:00 am to 4:30 pm weekdays with some possible work on Saturdays. Truck and equipment traffic will be limited to within FMC property boundaries.

For questions or concerns about this project, please feel free to contact Jessica Heideman, FMC Community Liaison at 716-735-9769 or via email at jessica.heideman@fmc.com.

Training for Safety



In October, employees from FMC Middleport participated in several safety trainings aimed at improving knowledge, skill, and response time. Trainings included a physical security breach scenario and outdoor fire extinguisher training.

PRSR STD
US POSTAGE
PAID
BUFFALO, NY
Permit No. 3538



Agricultural Solutions
Middleport, New York

Community Connection

Fall/Winter
2014

Your resource for news related to FMC Middleport Plant and the community

In this issue

- FMC Corporation Invests in FFA P.1
- Plant Smoke Incident Update P.2
- Safety Share: Hand Hygiene P.2
- CAP: Engaging the Community P.3
- Product Spotlight P.3
- Construction: WSI Upgrade P.4



FMC/FFA grant donation presentation. l to r: Diana O'Rourke Daigler-Advisor, Nathan Grant, Megan Blackburn, FFA president, Becca Albrecht, Jesse Wilcox – FFA sentinel, Emma Halstead – FFA VP, Ian Becker, Jess Heideman – FMC community liaison, Carolyn Waters – FFA treasurer.

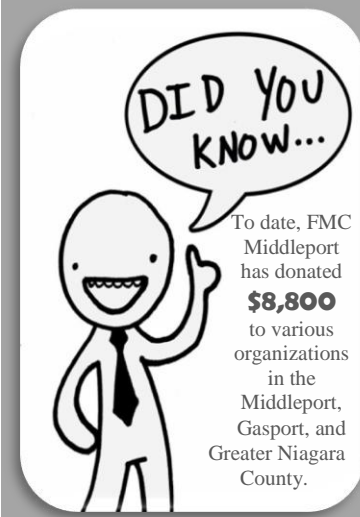
###



United Way: 17 Years and Counting

FMC Middleport employees received recognition for their **17 consecutive years of achieving a 100% employee donation** rate to the United Way.

Plant employees pledged over \$7600 and with a corporate match donated over \$12,000. Monies donated will stay local and benefit the United Way for Western Orleans County and the United Way of Greater Niagara County.



FMC Corporation Invests in Farming's Future through FFA Student Initiatives

FMC is providing grants to FFA chapters in each of its three, U.S. FMC Agricultural Solutions plant communities. The support is aimed at helping expand students' interest in science and agriculture by engaging with FMC visiting scientists, and developing vital career skills through participation in Career Development Events (CDE). The local FFA chapters earning grants are located at Walter Biddle Saul High School in Philadelphia, PA, Stark County High School in Toulon, Ill., and Royalton-Hartland High School in Middleport, NY.

"To continue America's leadership in agriculture, we need to engage students now," said John Kasper, FMC Agricultural Solutions North America commercial business director. "FFA prepares students for more than 300 careers and reaches more than 600,000 members. Our support can make a positive difference in the lives of many young people who will be the future scientists, business leaders and educators in global agricultural, food, fiber and natural resource industries."

Nationally, students will be recognized with the FFA Agriscience Plant Systems Research Proficiency Award, which is co-sponsored by FMC. This award supports students engaged in plant systems research. The research covers the life cycles, classifications, functions and practices of plant systems related to crops, turf grass, trees and shrubs and/or ornamental plants.

Awards are made available to every FFA chapter across the country. Four finalists will receive a \$500 cash award, and the winner receives an additional \$500 award. FMC executives will judge the national finalist entries and present the awards during the National FFA Convention.

"FFA makes it possible for students to match their classroom learning with supervised experiences, and leadership programs," said Glenn Sims, National FFA Foundation senior regional director. "It's because of the ongoing educational support from our sponsors, such as FMC, that agricultural students grow and gain career success."



l to r: Greg Sullivan, FMC Middleport interim plant manager, presents Jeff Evoy, Medina Central School District superintendent, with backpacks filled with school supplies to help support the educational needs of Medina Central School District students and their families that may not be able to do so otherwise.

Plant Smoke Incident Update

At approximately 10:00 a.m. Friday, November 14, 2014 the FMC Middleport, NY agricultural solution formulation facility identified smoke coming from a vent associated with its Building 70 process, where blending and packaging of products occur. Operators immediately shut down the process and followed safety procedures by calling for outside emergency response. Facility suppression systems activated and the incident was under control in just a few minutes.

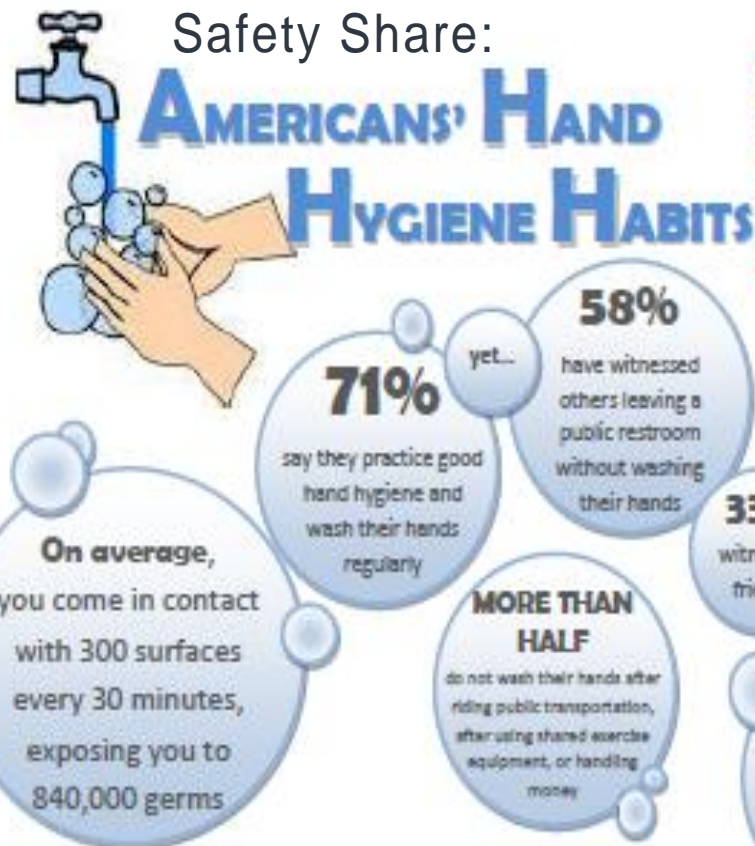
Through the weekend the facility temporarily ceased operations as we investigated the incident. The root-cause investigation continues to understand the cause of the incident. We are uncertain how much time the investigation will take. We are committed to being thorough. It is important to FMC to learn what happened, its cause and to use this knowledge for prevention.

We notified the New York State Department of Environmental Conservation of the incident in an abundance of caution while we investigate. Also, FMC immediately notified the Royalton Hartland School nearby of the situation as a precautionary measure.

There were no injuries as a result of Friday's incident.

FMC is grateful for all departments that responded and to our team of employees.

We remain committed to safe operations and regret any concern this incident may have caused to our neighbors and employees and their families.



A majority of Americans are getting caught dirty-handed when it comes to their hand washing habits. A survey by SCA, a global hygiene company, uncovered that consumers understand the importance of hand hygiene but their practices may be grossly exaggerated.

Thank You FMC

By: Megan Blackburn, Roy-Hart FFA president and Emma Halstead, FFA vice president & FMC CAP member

FFA, or Future Farmers of America, has been approved as a chapter at Royalton-Hartland Middle and High Schools after students worked together to show the benefits this would have for students. For two years, students bonded together to move forward with a successful application to the state and national level of FFA.

We currently have established a chapter that is growing and expanding to include students from Roy-Hart, Barker and Akron.

The Royalton-Hartland Central School District chapter strives to emphasize the impact that agriculture has on today's society. After all, FFA isn't just about farming! In addition to the traditional crops and livestock background, FFA touches upon many topics, such as pharmaceuticals, business management, marketing, engineering, service programs offered through BOCES, leadership and even politics. The chapter continues to develop and hopes to recruit more students into the program.

This year, our FFA chapter received a \$4500 grant from FMC to help fund the start

up of the chapter. The grant is for chapter specific items, such as officer totems, student handbooks, manuals, transportation, conferences, leadership development, projects and other activities directly related to the students and chapter.

Our membership has expressed interest in raising small animals, such as rabbits. We are also looking at conducting many projects including a greenhouse and/or 'U-Pick' pumpkin patch. In order to make these projects successful, we will need items such as animal feed, small animal enclosures, shavings/litter, lumber, screws, nails, seeds, fertilizer, and topsoil. Funds donated by FMC, along with outside material donations, will help FFA students build a successful program.

We are very appreciative to FMC for their generosity of this grant and cannot wait to see what the future holds for our chapter.

If anyone is interested in donating material items to help us meet our project goals, please contact our advisor, Diana O'Rourke Daigler at Orouked@royhart.org.

Middleport CAP

Engaging the Community through Dialogue and Feedback

Established in the 1990s, the FMC-Middleport Community Advisory Panel (CAP) is designed to build a relationship between the community and the company. The panel serves as a forum for open dialogue between residents of the Royalton-Hartland school district communities and representatives of the company.

The members of the CAP represent a broad cross-section of the community, including new educators, local government officials, health organizations, religion, business, senior citizens, students, public safety services and others.

Each member was invited to participate based upon his or her interest in their community and FMC.

The members serve as an independent body of volunteers and function in an advisory capacity. They are not a decision making body for FMC; however, the goals are to reach common ground and to build trust between the community and the company.

In 2014, the group added new members, a new facilitator and has been actively learning about FMC Corporation and its Middleport plant facility.

The group toured the FMC plant to learn about operations

and work practices to enhance their discussion. Topics have included planning for FMC's biannual Community Day, environmental performance and regulatory requirements, end products and applications as well as FMC's community contributions and involvement.

Planning for the 2015 CAP activities will begin in November and extend into February. Potential topics include local education and waste to energy.

To learn more about the Community Advisory Panel, please contact Facilitator Mary Green at 1-800-784-4343.



QUICK FACTS

- Broad-spectrum Insecticide that when applied to crops at a specific time in the growing cycle, protects the crops from some of the most damaging pests that affect crop yield and quality for a longer period of time through the growing season. The extended performance allows plants to remain healthier longer and thrive without stress to growth and grain yield.
- Provides excellent control on the multi-pest complexes common in corn, soybeans, potatoes, cotton, and other crops.
- There are 45 types of plant harming insects and mites HERO® controls.
- Controls a wide spectrum of late-season insects that attacks corn silks, ears, stalks, and the upper leaves of the plants. Optimal application timing is from pre-tassel through silking.
- Controls corn insects such as 2nd Generation European Corn Borer, Corn Rootworm, Japanese Beetle, Corn Earworm, Fall Armyworm, Southwestern Corn Borer, Western Bean Cutworm, and Spider Mites.
- Helps farmers reduce quality issues in crop yields by controlling insects whose feeding cause damage to the corn that may cause entry sites for other diseases, which can affect germ on seed corn.

Environmental Updates

FMC has been asked to begin discussing appropriate options that will address contaminated soil beneath the Old Mill Mobile Home Park in Middleport, NY. As part of this process, FMC is committed to working in a manner that is respectful of the owner and residents.

FMC believes in doing the right thing. The company knows it is critical to approach this project in a sensitive manner, recognizing concerns of all our stakeholders. We are committed to open communications, transparency and community support. FMC and its team of outside experts are reviewing options that best suit this situation.

Once FMC, the New York State Department of Environmental Conservation and the United States Environmental Protection Agency discuss alternatives and a path forward, we will discuss those alternatives with the residents and work with them to minimize disruption as best as possible by assisting with any impacts from the project. We also will establish an easy process to provide updated information, handle inquiries and address the needs of those affected.

For questions related to the Old Mill Mobile Home Park, please contact FMC Middleport's Community Liaison Jessica Heideman at 716-735-9768 or jessica.heideman@fmc.com